

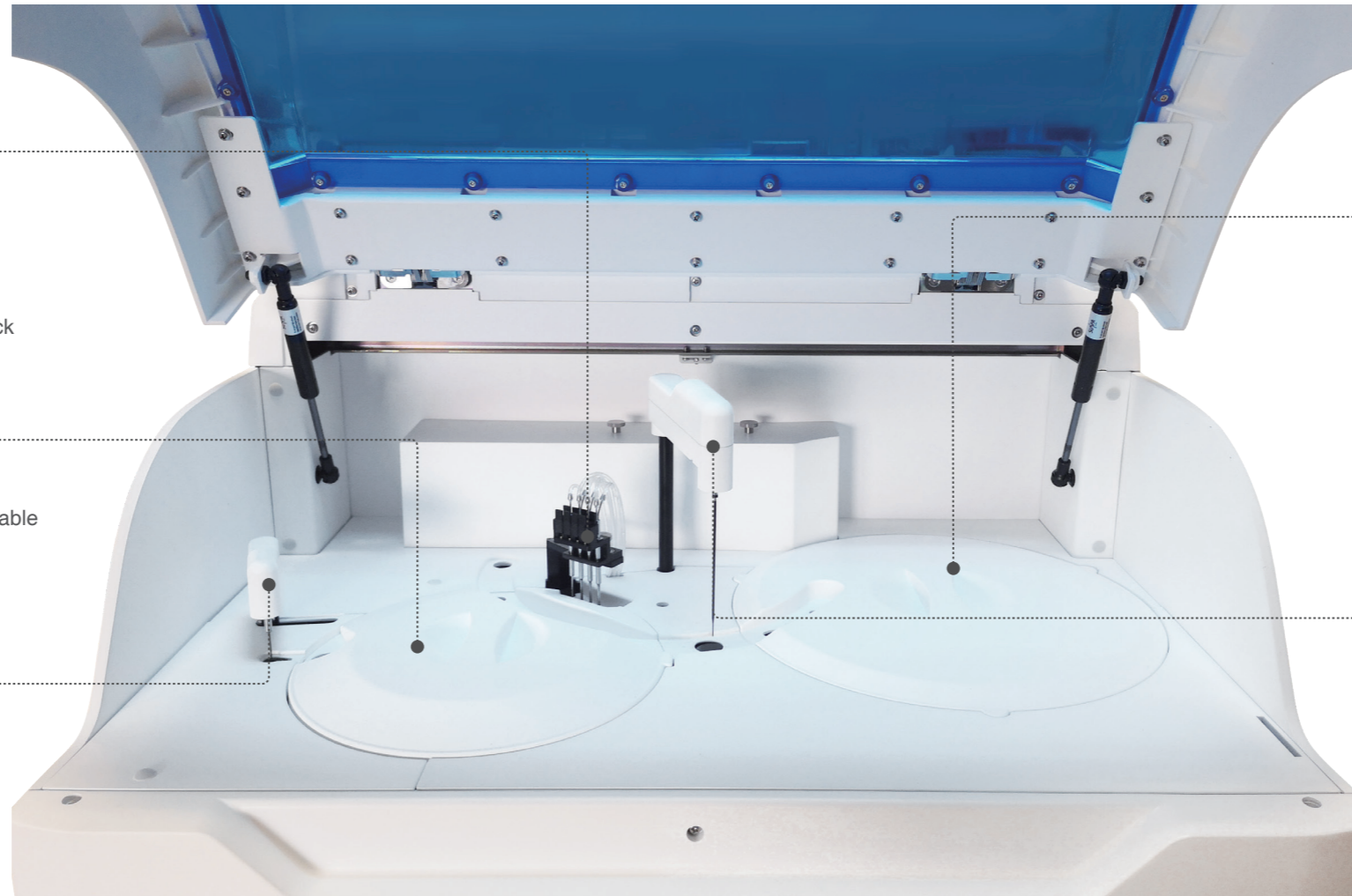
Biossays[®] 240 Plus

Automatic Biochemistry Analyzer



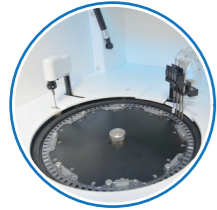
Compact Design with Cost Saving

www.snibe.com
sales@snibe.com



Washer

- 4-step cuvette washing procedure
- Wash with pre-heated pure water and auto-diluted detergent
- Automated cuvette wash & cell blank check



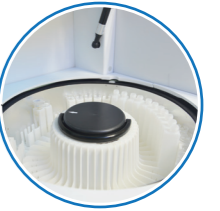
Reaction Disk

- 80 reaction cuvettes, Optical plastic, Resuable
- 100 µL minimum reaction volume
- Reaction time: 12 min, 32 min



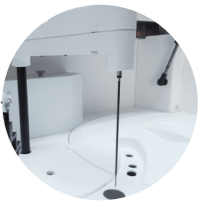
Mixer

- Wash with pre-heated water before and after mixing
- 1400 rpm high-speed stirring needle (coated with TEFLON)
- Simple structure for maintenance



Sample & Reagent Disk

- Up to 90 sample positions, continuous loading
- Supporting polytype primary tube & microcontainer cup
- Up to 90 reagent positions
- Continuous loading during measurement
- Built in barcode reader



Sample & Reagent Probe

- 2.0 µL - 35.0 µL sample volume with stepping 0.1 µL
- 20 µL - 350 µL reagent volume with stepping 1 µL
- Anti-collision to protect needle
- Coated with TEFLON to prevent cross-contamination
- Liquid level detection and clot detection

Test Menu



Cardiac

- CK
- CK-MB
- α-HBDH
- LDH
- Hcy
- LDH1
- *D-Dimer
- *ACE
- *IMA
- *MYO



Pancreatic

- α-AMY
- LIP



Inorganic Ion

- Ca
- P (phos)
- Mg



Diabetes

- GLU
- LAC
- HbA1c
- GSP
- D3-HB
- GA



Hepatic

- TBA
- ALT (SGPT)
- AST (SGOT)
- ALP
- GGT
- TBIL
- DBIL
- TP
- ALB
- Ammonia
- PA
- CHE

- AFU
- 5'-NT
- Haptoglobin
- *ADA



ISE

- Na⁺
- K⁺
- Cl⁻
- Ca²⁺
- pH



Inflammation

- CRP (Full Range)



Lipids

- HDL-C
- LDL-C
- TC
- TG
- ApoE
- ApoA1
- ApoB
- Lp(a)
- NEFA



Renal

- Cr (CREA)
- Uric Acid
- Urea
- Cys-C
- α1-MG
- β2-MG
- mALB
- Urine/CSF Protein
- RBP
- NAG



Immune

- IgM
- IgA
- IgG
- *C3
- *C4



Rheumatism

- ASO
- RF



Anemia

- Transferrin
- Fe (Iron)
- UIBC
- *G6PD
- *Ferritin

Features & Advantages

- **Constant 240 tests/hour**, one of the fastest small size biochemistry systems
100 µL minimum reaction volume
- **Low water consumption** (2.0-3.0 L/H)
- Close system and open system is optional
- High efficient washing station for cuvettes
- Random access, continuous loading
- Incorporated with liquid level sensor, volume tracking, collision detection and clot detection
- 24 hours refrigeration system with separate switch
- Unlimited STAT position
- **16 wavelengths** range from 340 nm-800 nm
- Automatic cuvette wash & cell blank check
- Real-time reagent levels monitoring, displaying and alerting function

Specifications

Equipment Type	Automatic discrete, unlimited STAT priority
Throughput	240 tests/hour
ISE	Optional (200 tests/hour)
Measuring Principle	1-Point Endpoint, 2-Point Endpoint, 2-Point Rate, Rate A, ISE technology
Calibration Options	1-Point Linear, 2-Point Linear, Multi-Point Linear, Non-Linear, K Factor
Sample Type	Serum; Plasma; Urine; CSF
Sample Volume	Biochemistry: 2.0 µL-35.0 µL; ISE: 90.0 µL
Sample Handling	Up to 90 sample positions, continuous loading, 24 hours refrigeration function with separate switch
Reagent Handling	Up to 90 reagent positions, continuous loading, 24 hours refrigeration function with separate switch
Reagent Volume	20 µL-350 µL
Reaction Temperature	37.0 °C ±0.2 °C
Reagent Bottle Volume	10 mL+30 mL, 50 mL
Reaction Time	12 min/32 min
Dispensing System	Sample & reagent probe with liquid level detection and clot detection
Wavelength	16 wavelengths, 340 nm, 380 nm, 405 nm, 450nm, 480 nm, 505 nm, 546 nm, 570 nm, 600 nm, 630 nm, 660 nm, 700 nm, 720 nm, 750 nm, 780 nm, 800 nm
Mixing System	1 independent stirring needle (coated with TEFLON)
Dilution	Auto-dilution
Power Supply	a.c.100 Vac-240 Vac, 50/60 Hz
Barcode Type	code 128, code 39, code 93, codabar, 2/5 Interleaved
Reaction Volume	100 µL-380 µL
Cuvette	80 optical plastic cuvettes, reusable, optical diameter is 5 mm
Light Source	20 W/12 V, halogen lamp, 2000 H
Absorbance Range	0 ABS-3.5 ABS
Water Consumption	Maximum 3.0 L/H (2.0 L/H;Single Reagent)
Weight	68 Kg
Dimension	L x W x H= 730 mm x 500 mm x 620 mm (28.74 in x 19.69 in x 24.41 in)

Biossays® is a trademark of Snibe.

All other product names and trademarks are the property of their respective owners.



Shenzhen New Industries Biomedical Engineering Co., Ltd.
(SNIBE Co.,Ltd.)

No.23, Jinxiu East Road, Pingshan District, 518122 Shenzhen,
P.R. China

Tel: +86 755 26501514
Email: sales@snibe.com

Fax: +86 755 26654850
Web: www.snibe.com

Follow us on

